

A1 in Northumberland: Morpeth to Ellingham

Scheme Number: TR010041

6.6 Environmental Statement – Figure 11.5 Potential Contamination Sources

Part B

APFP Regulation 5(2)(a)

Planning Act 2008

Infrastructure Planning (Applications: Prescribed
Forms and Procedure) Regulations 2009

June 2020

Infrastructure Planning

Planning Act 2008

**The Infrastructure Planning
(Applications: Prescribed Forms and
Procedure) Regulations 2009**

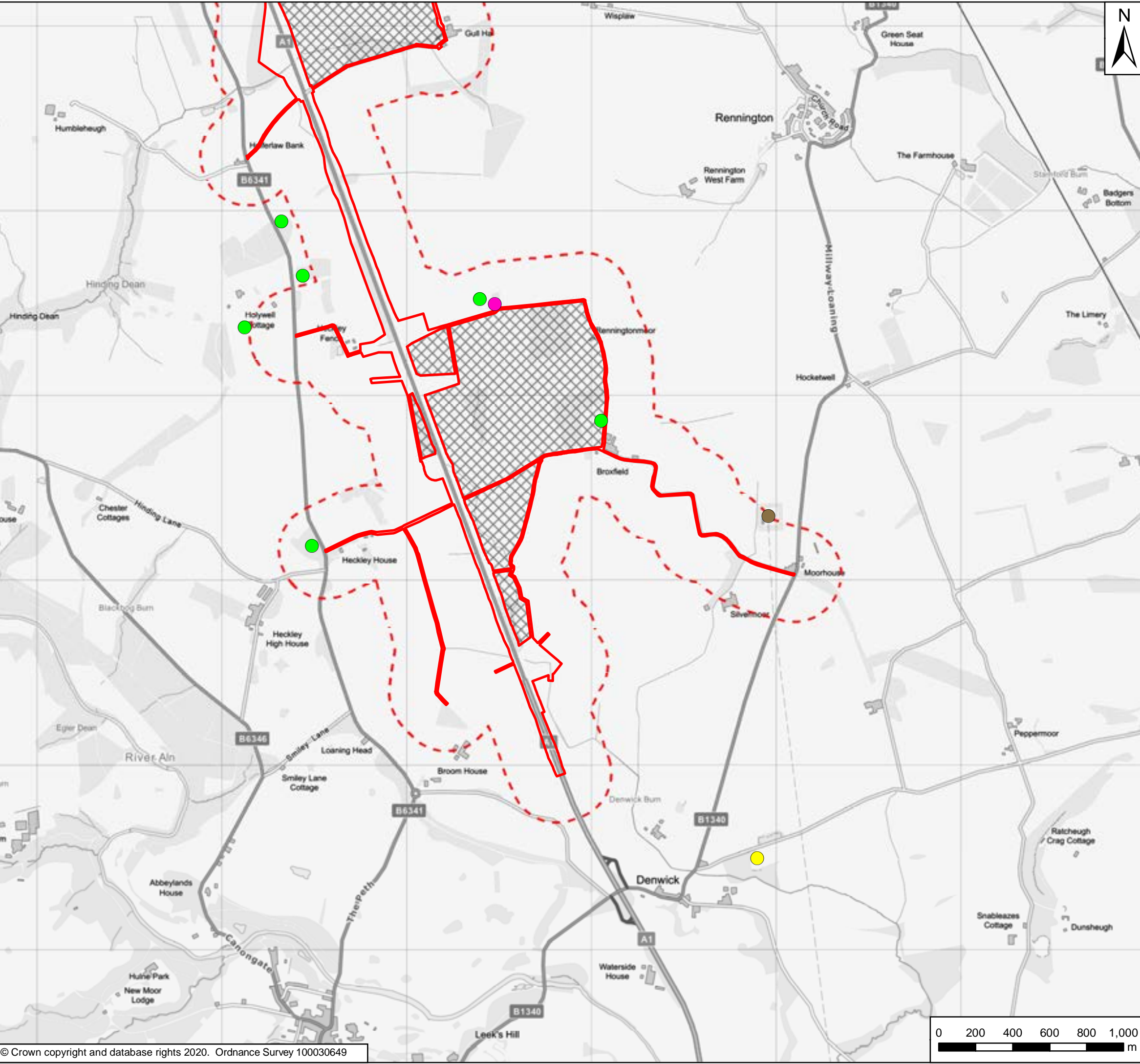
**The A1 in Northumberland: Morpeth to Ellingham
Development Consent Order 20[xx]**

Environmental Statement – Figures

Regulation Reference:	APFP Regulation 5(2)(a)
Planning Inspectorate Scheme Reference	TR010041
Application Document Reference	TR010041/APP/6.6
Author:	A1 in Northumberland: Morpeth to Ellingham Project Team, Highways England

Version	Date	Status of Version
Rev 0	June 2020	Application Issue

Date Saved: 26/06/2020 09:51:17 User Name: UKGDH001
 Document Path: \\uk.wspgroup.com\central\data\Projects\700380xx\70038006 - A1 in Northumberland\02 WIP\EIA and flood risk\02 Drawing\ES Figures Rev P03\Figure 11.5 - Potential Contamination Sources.mxd

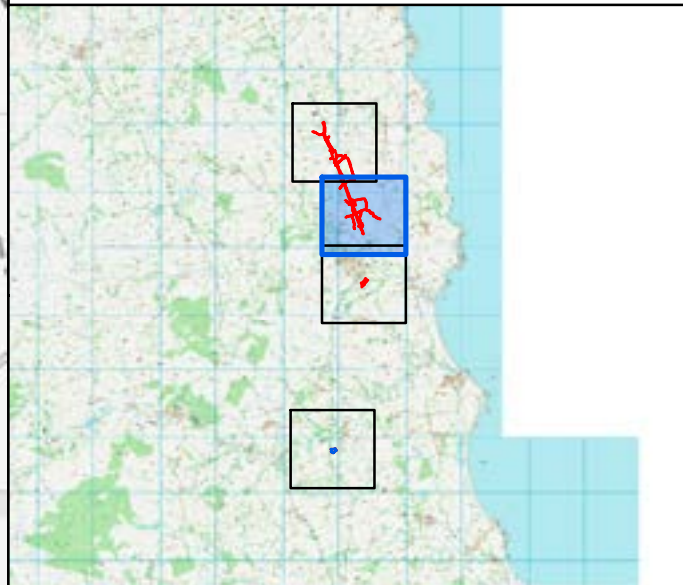


Key

- Order Limits
- Areas Excluded from Order Limits
- Main Compound
- 250m Study Area

Potential contamination sources

- Electricity substation
- Eshott Airfield
- Former coal pit
- Former corn mill
- Former limekiln
- Former smithy
- Former tramway
- Historical landfill
- Made ground associated with infilled historical quarries, pits and ponds



Rev	Date	Description	By	Chk'd	App'd
P03	June 2020	Third Issue	GH	VW	KS
P02	09/12/19	Second Issue	GH	VW	KS
P01	31/07/19	First Issue	GH	VW	KS

Client

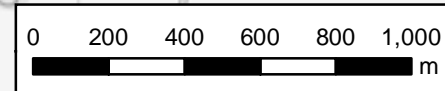
Project Title: A1 in Northumberland: Morpeth to Ellingham

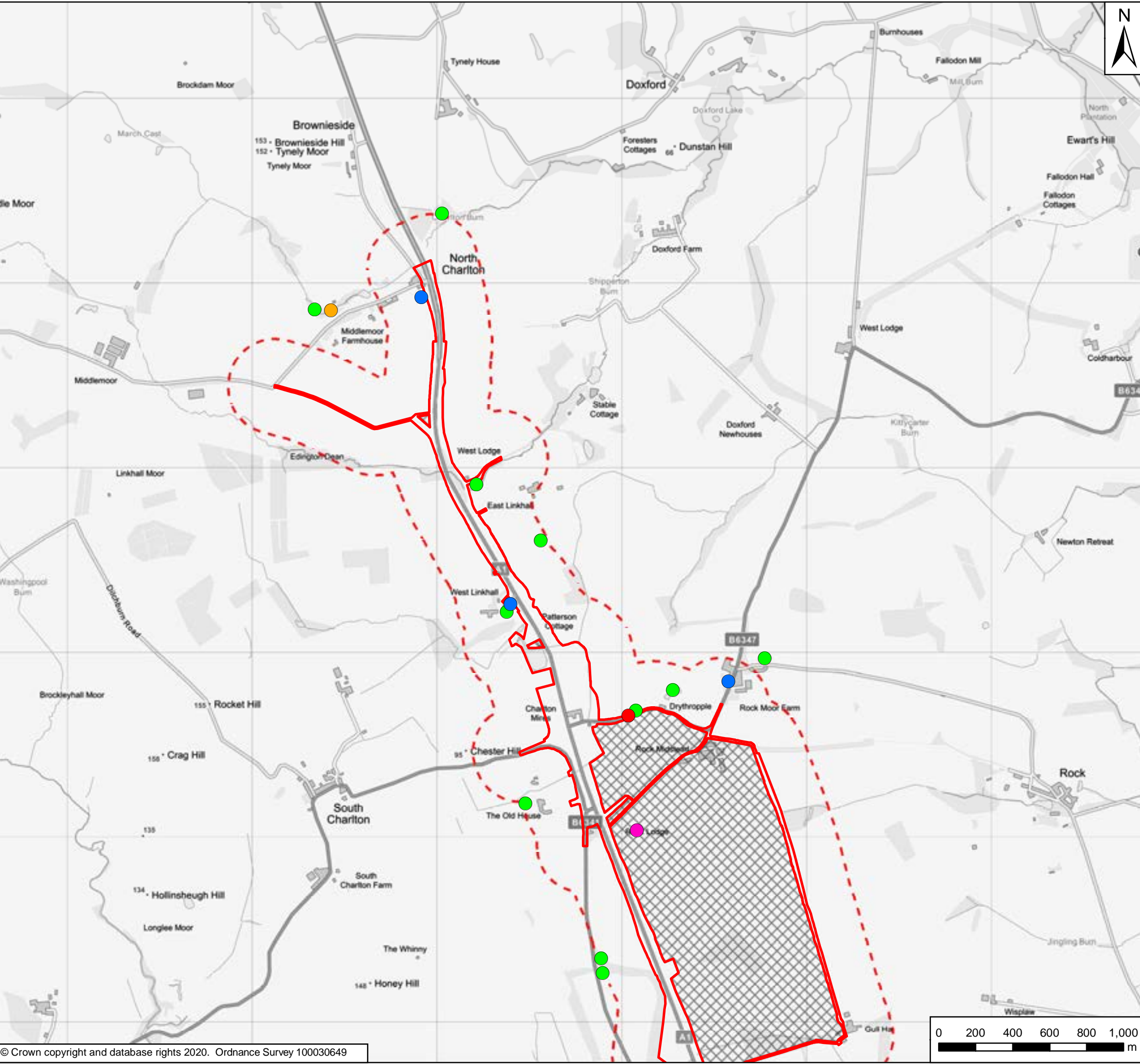
Drawing Title: Figure 11.5 Potential Contamination Sources
Page 1 of 4

Scale	Drawn	Checked	Approved	Authorised
1:20,000	GH	VW	KS	DM
Original Size	Date	Date	Date	Date
A3	31/07/19	31/07/19	31/07/19	31/07/19

Drawing Status: For Information
Suitability: S1

Drawing Number Project: HE551459	Originator WSP	Volume 6.6	Project Ref. No. 70044137
A2E Location	RP Type	LE Role	2130 Number
			Revision P03



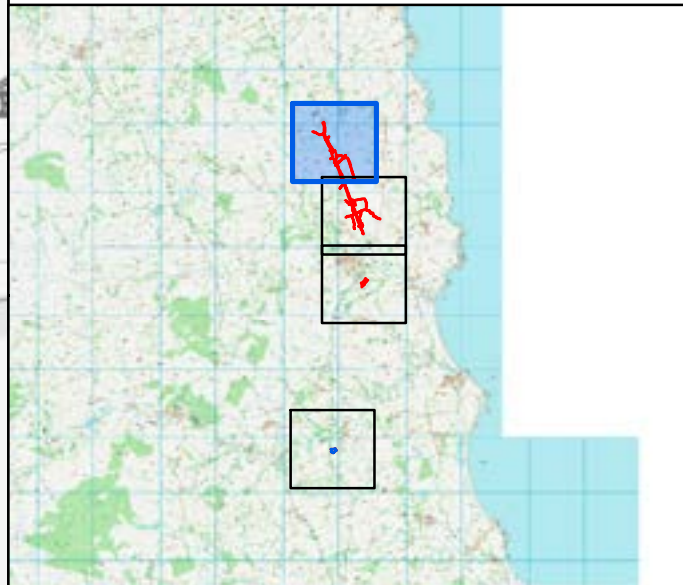


Key

- Order Limits
- Areas Excluded from Order Limits
- Main Compound
- 250m Study Area

Potential contamination sources

- Electricity substation
- Eshott Airfield
- Former coal pit
- Former corn mill
- Former limekiln
- Former smithy
- Former tramway
- Historical landfill
- Made ground associated with infilled historical quarries, pits and ponds



Rev	Date	Description	By	Chk'd	App'd
P03	June 2020	Third Issue	GH	VW	KS
P02	09/12/19	Second Issue	GH	VW	KS
P01	31/07/19	First Issue	GH	VW	KS



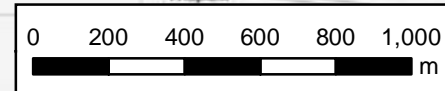
Project Title: A1 in Northumberland: Morpeth to Ellingham

Drawing Title: Figure 11.5 Potential Contamination Sources
Page 2 of 4

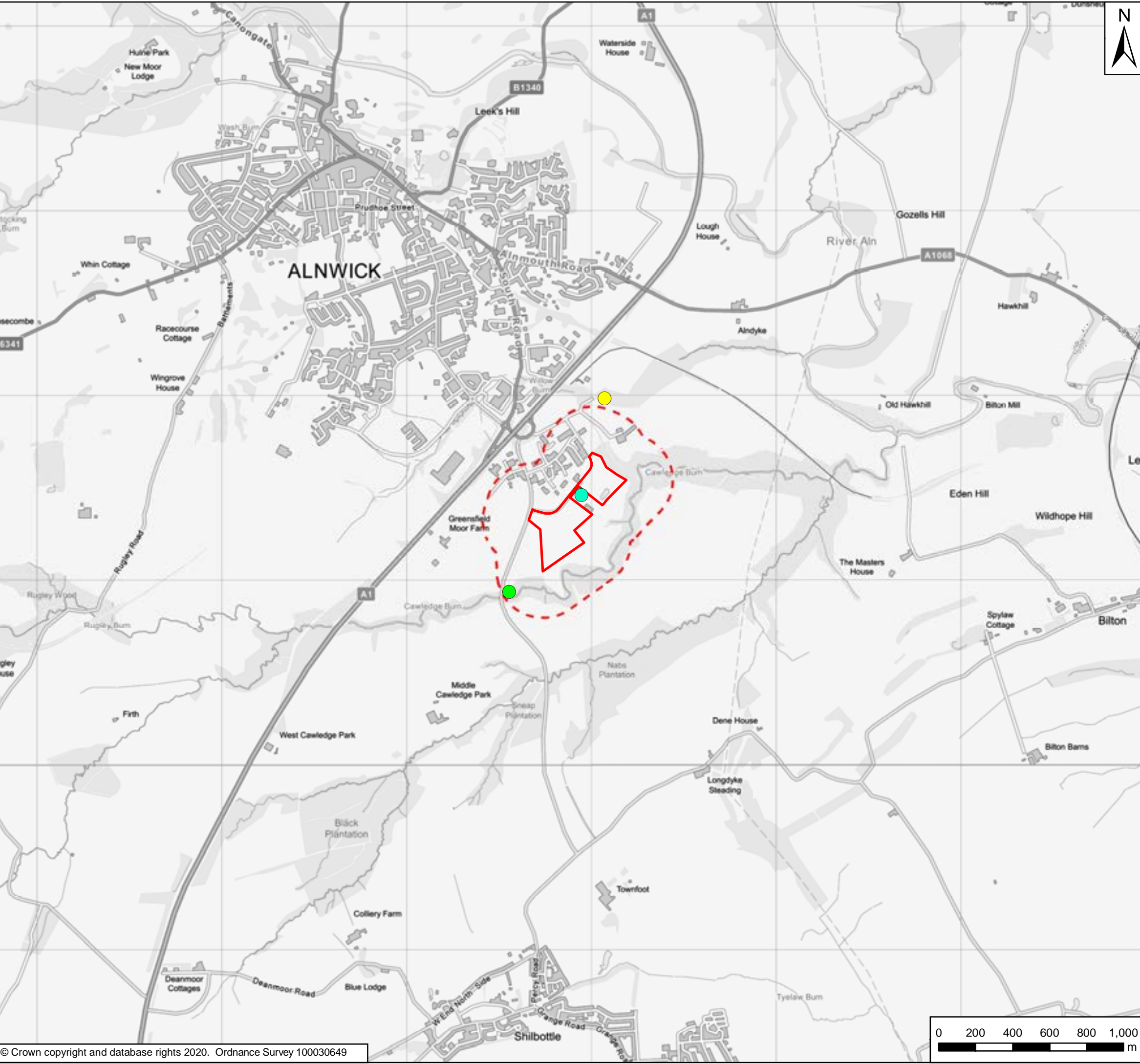
Scale	Drawn	Checked	Approved	Authorised
1:20,000	GH	VW	KS	DM
Original Size	Date	Date	Date	Date
A3	31/07/19	31/07/19	31/07/19	31/07/19

Drawing Status: For Information
Suitability: S1

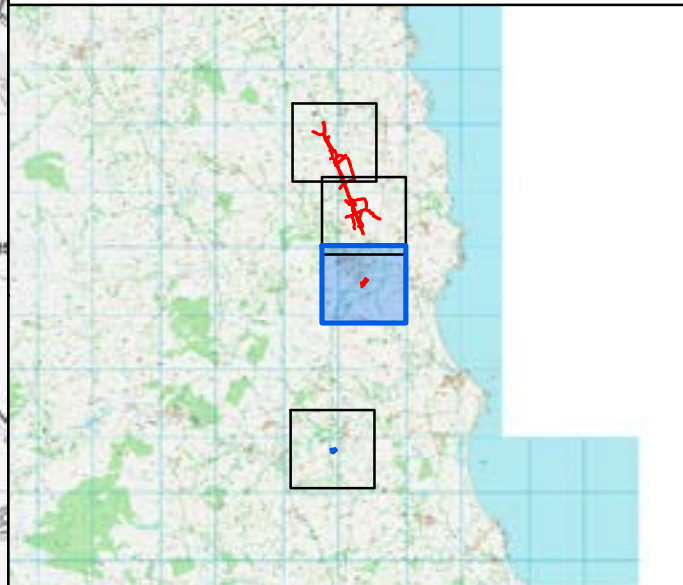
Drawing Number Project: HE551459	Originator WSP	Volume 6.6	Project Ref. No. 70044137
A2E Location	RP Type	LE Role	2130 Number
			Revision P03



Date Saved: 26/06/2020 09:51:17 User Name: UKGDH001
 Document Path: \\uk.wspgroup.com\central_data\Projects\700380\A1 in Northumberland\02 WIP\EIA and flood risk\02 Drawing\ES Figures Rev P03\Figure 11.5 - Potential Contamination Sources.mxd



- Key**
- Order Limits
 - Areas Excluded from Order Limits
 - Main Compound
 - 250m Study Area
- Potential contamination sources**
- Electricity substation
 - Eshott Airfield
 - Former coal pit
 - Former corn mill
 - Former limekiln
 - Former smithy
 - Former tramway
 - Historical landfill
 - Made ground associated with infilled historical quarries, pits and ponds



Rev	Date	Description	By	Chk'd	App'd
P03	June 2020	Third Issue	GH	VW	KS
P02	09/12/19	Second Issue	GH	VW	KS
P01	31/07/19	First Issue	GH	VW	KS



Client
highways england

Project Title
A1 in Northumberland: Morpeth to Ellingham

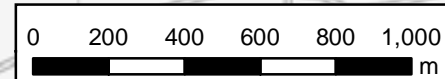
Drawing Title
Figure 11.5 Potential Contamination Sources
 Page 3 of 4

Scale	Drawn	Checked	Approved	Authorised
1:20,000	GH	VW	KS	DM
Original Size	Date	Date	Date	Date
A3	31/07/19	31/07/19	31/07/19	31/07/19

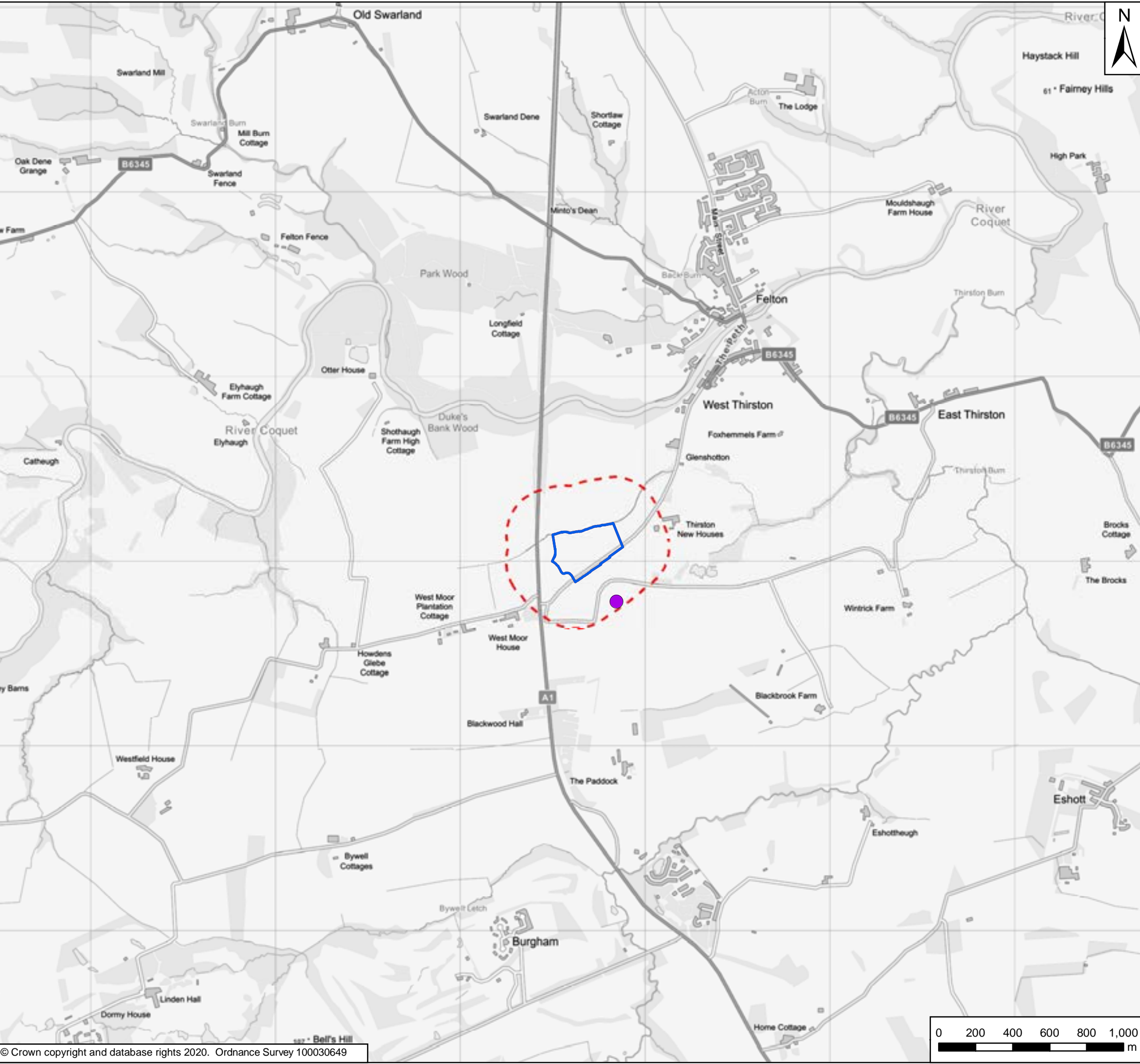
Drawing Status
For Information

Suitability
S1

Drawing Number Project HE551459	Originator WSP	Volume 6.6	Project Ref. No. 70044137
A2E Location	RP Type	LE Role	2130 Number
			Revision P03



Date Saved: 26/06/2020 09:51:17 User Name: UKGDH001
 Document Path: \\uk.wspgroup.com\central\data\Projects\7003800x\70038006 - A1 in Northumberland\02 WIP\EIA and flood risk\02 Drawing\Env Statement\ES Figures Rev P03\Figure 11.5 - Potential Contamination Sources.mxd

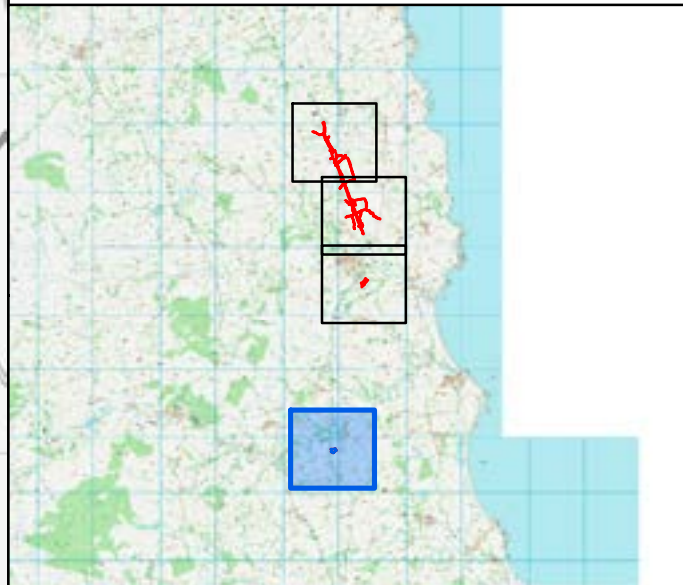


Key

- Order Limits
- Areas Excluded from Order Limits
- Main Compound
- 250m Study Area

Potential contamination sources

- Electricity substation
- Eshott Airfield
- Former coal pit
- Former corn mill
- Former limekiln
- Former smithy
- Former tramway
- Historical landfill
- Made ground associated with infilled historical quarries, pits and ponds



Rev	Date	Description	By	Chk'd	App'd
P03	June 2020	Third Issue	GH	VW	KS
P02	09/12/19	Second Issue	GH	VW	KS
P01	31/07/19	First Issue	GH	VW	KS

Client

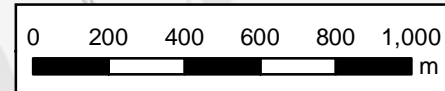
Project Title: A1 in Northumberland: Morpeth to Ellingham

Drawing Title: Figure 11.5 Potential Contamination Sources
Page 4 of 4

Scale	Drawn	Checked	Approved	Authorised
1:20,000	GH	VW	KS	DM
Original Size	Date	Date	Date	Date
A3	31/07/19	31/07/19	31/07/19	31/07/19

Drawing Status: For Information
Suitability: S1

Drawing Number Project: HE551459	Originator WSP	Volume 6.6	Project Ref. No. 70044137
A2E Location	RP Type	LE Role	2130 Number
			Revision P03



© Crown copyright 2020.

You may re-use this information (not including logos) free of charge in any format or medium, under the terms of the Open Government Licence. To view this licence:

visit www.nationalarchives.gov.uk/doc/open-government-licence/

write to the **Information Policy Team, The National Archives,**

Kew, London TW9 4DU, or email

psi@nationalarchives.gsi.gov.uk.

This document is also available on our website at www.gov.uk/highways

If you have any enquiries about this document A1inNorthumberland@highwaysengland.co.uk or call **0300 470 4580***.

*Calls to 03 numbers cost no more than a national rate call to an 01 or 02 number and must count towards any inclusive minutes in the same way as 01 and 02 calls.

These rules apply to calls from any type of line including mobile, BT, other fixed line or payphone. Calls may be recorded or monitored.

Registered office Bridge House, 1 Walnut Tree Close, Guildford GU1 4LZ

Highways England Company Limited registered in England and Wales number 09346363